

Using DVB-T/DAB RTL2832 based USB receiver with HSDR

Hardware requirements:

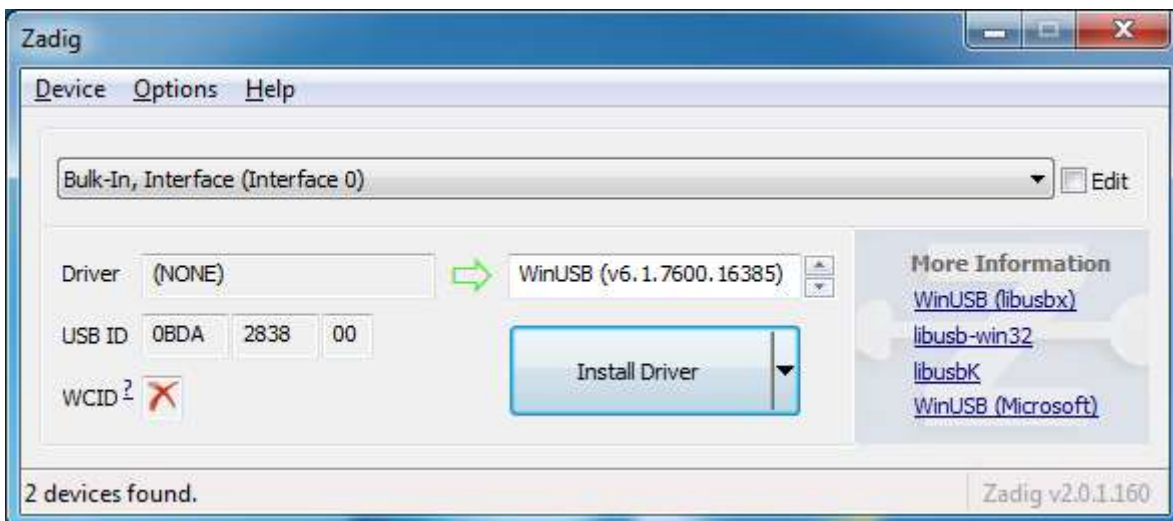
- DVB-T/DAB USB dongle with Realtek RTL2832 chipset
- PC with Dual Core CPU, Soundcard, one free USB 2.0 port

Software requirements:

- Microsoft Windows XP or newer, **latest Service required!!!** (XP:SP3, Vista:SP2, Win7:SP1)
- [HSDR](#) 2.63 or newer (SDR Software application)
- [ExtIO_RTL.dll](#) (hardware specific DLL)
- [Zadig](#) (device driver installer)

Installation:

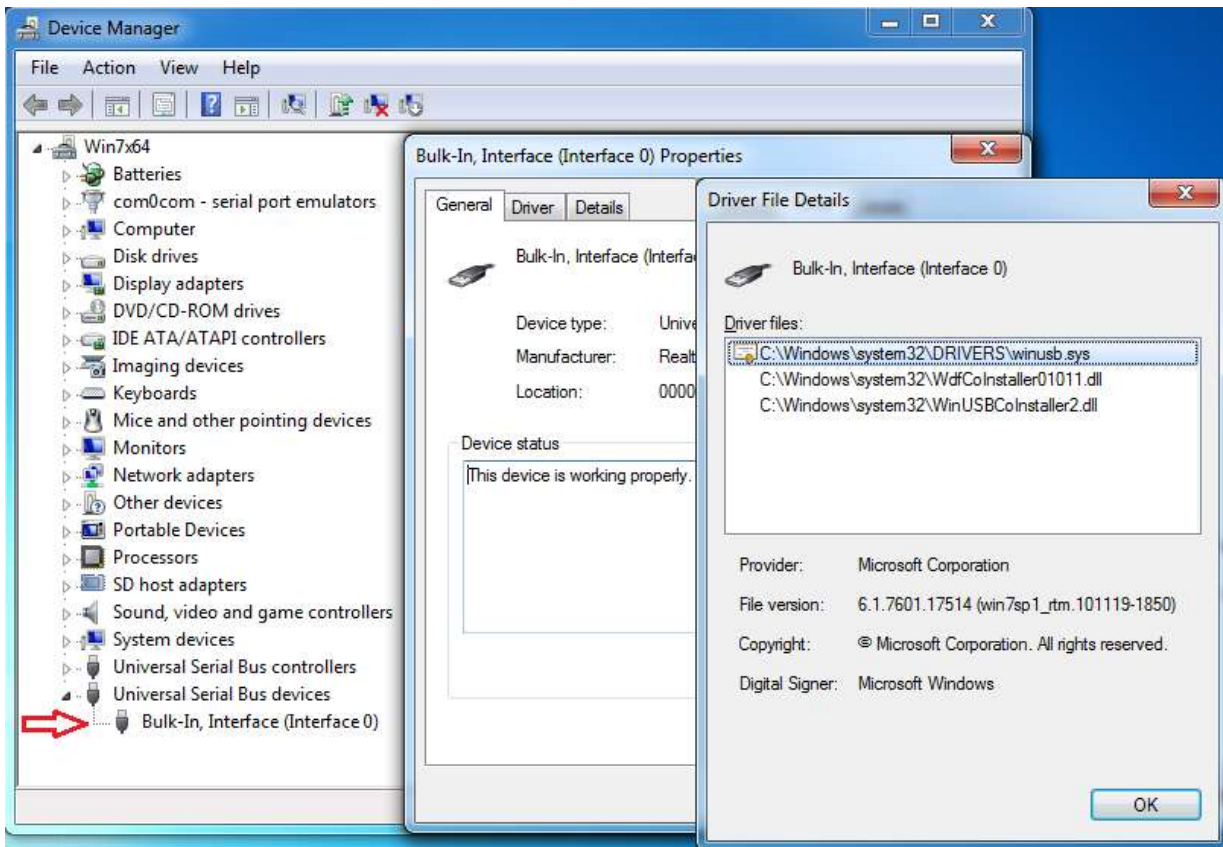
1. Don't install any software delivered with the USB dongle.
If already done, uninstall this software (very important!!!)
2. Plug in the USB receiver and complete the driver installation by click Next/Finish (if demanded).
(the correct driver will be installed later on)
3. Download Zadig from <http://zadig.akeo.ie/>
Windows Vista/7/8: download the newest version - Windows XP users require a special zadig_xp version!
4. Windows 8/8.1 64Bit users need to disable the "[driver signature enforcement](#)" first.
5. Start Zadig and press "Install Driver" to install the WinUSB drivers after selecting the right device(s).The device name is often "Bulk-In, Interface (Interface 0)". Problems occur when the original driver (delivered with the USB dongle) is still installed! These drivers sometimes do not get uninstalled correctly. In this case, click Options and enable "List All Devices", then choose the RTL-device and press "Replace Driver". Close Zadig.



6. Download and Install HSDR v2.63 or later from <http://hdsdr.de>, but don't start HSDR immediately.
7. Download ExtIO_RTL.DLL from https://github.com/josemariaaraujo/ExtIO_RTL/raw/master/Release/ExtIO_RTL.dll
8. Copy ExtIO_RTL.DLL into your HSDR installation directory (default=C:\Program Files (x86)\HSDR)
9. (re)start HSDR (select ExtIO_RTL.DLL and preferred output soundcard if demanded)
10. You are ready to run HSDR! (press Start)

Troubleshooting:

- check the device compatibility (ask Google)
- don't use USB 3.0 ports (blue) or disable USB3 support in BIOS
- don't use USB 1.x ports
- don't use USB extension cables
- don't use USB hubs
- try different USB ports
- Temporarily disconnect other USB devices (printer, scanner, storage, other SDR hardware, ...)
- check Windows Device Manager



-change all ExtIO-DLL settings to default values

