



Good PSK for CB

Ver. 1.0

User Manual

Rev. 1.0@2013-05

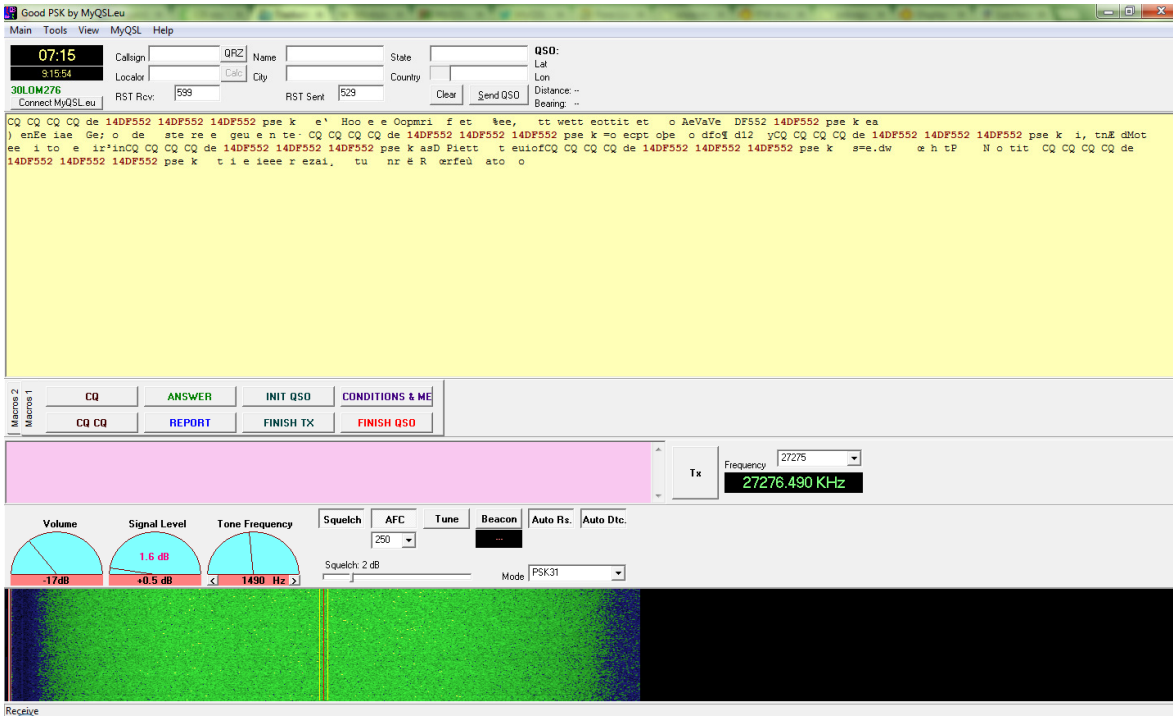
By 30LOM276 Dani

1 - What is this program?

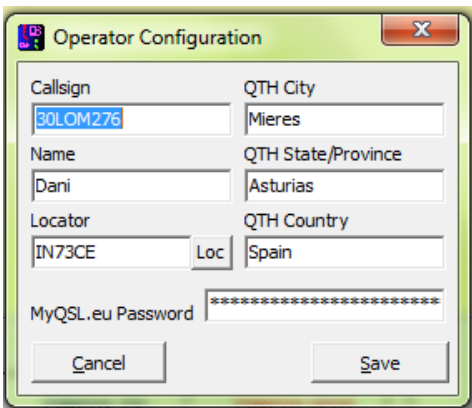
Is a encoder and decoder for PSK (Phase Shift Keying) for user specific of CB band. This program interprets the indicative use on the 11 meter band, send spots to Tweet Cluster, calculate distance and bearing between users, send QSL via MyQSL, sends a PSKReporter spots to appear on their statistics and maps ... little by little, you may know all the characteristics of "Good PSK for CB".

2 – Configure

When you open the program, the main window is that:



Go to the main menu and click on "Main / Operator", then you will see a window like this:



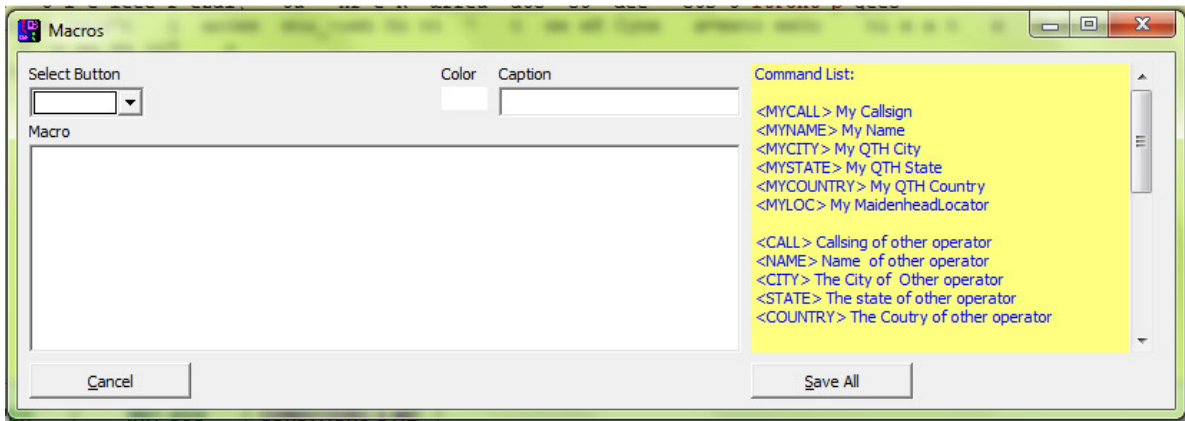
You must fill in fields with the required data. The call is used in the 11 meter band: DDCCNNNN, with DD its division, CCC letters indicating their club or association, and NNN personal number.

Fill in the information about your QTH, and the space devoted to "Locator". If you're unsure of yours, click on the "Loc" and will open a browser window with a map where you can select your location and indicate his locator.

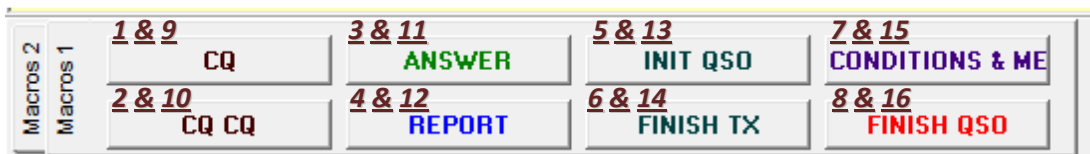
In the space provided as MyQSL password, type the same with that recorded in the system. The same will be coded, and you can access data from user profiles and send QSL automatically.

3 – Configure the Macros

Macros are automatic sequences to establish QSO between users. You can configure them personally or use the default that are in the program. To do this, go to "Main / Macros" then you will see a window like this:



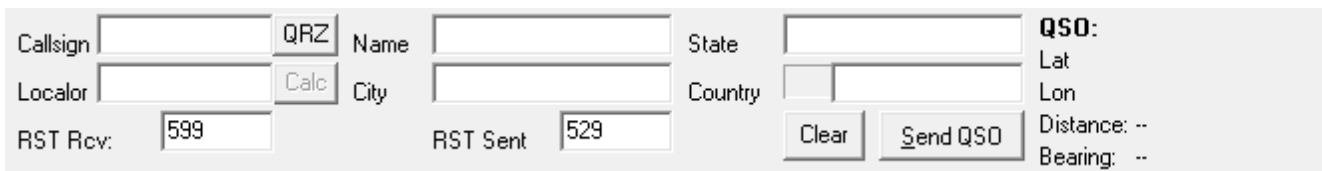
Selecting the menu "Select Button", you can choose the button that save your sequence. They are numbered in the following image:



The numbers 1 to 8 are on the "Macros 1" and the numbers from 9 to 16, in "Macros 2"

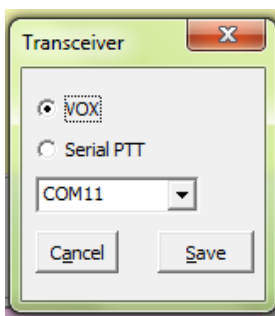
To configure, select the menu button, then text will appear in the box "Caption", one color at his side, and other text in "Macro". The first indicates the text that appears on the button, the second color of it, and in the third, the description of the sequence to send.

Possible sequence modifiers are in the box on the right. Those who refer to another operator, data are collected from the QSO area at the top of the window:



You can write the data at hand, or if you see that the program detects a call sign at the reception, double click on it, it will automatically appear in the box above. And if this person is in the database MySQL clicking on QRZ, download personal data such as QRA, and QTH Locator.

4 – Transceiver



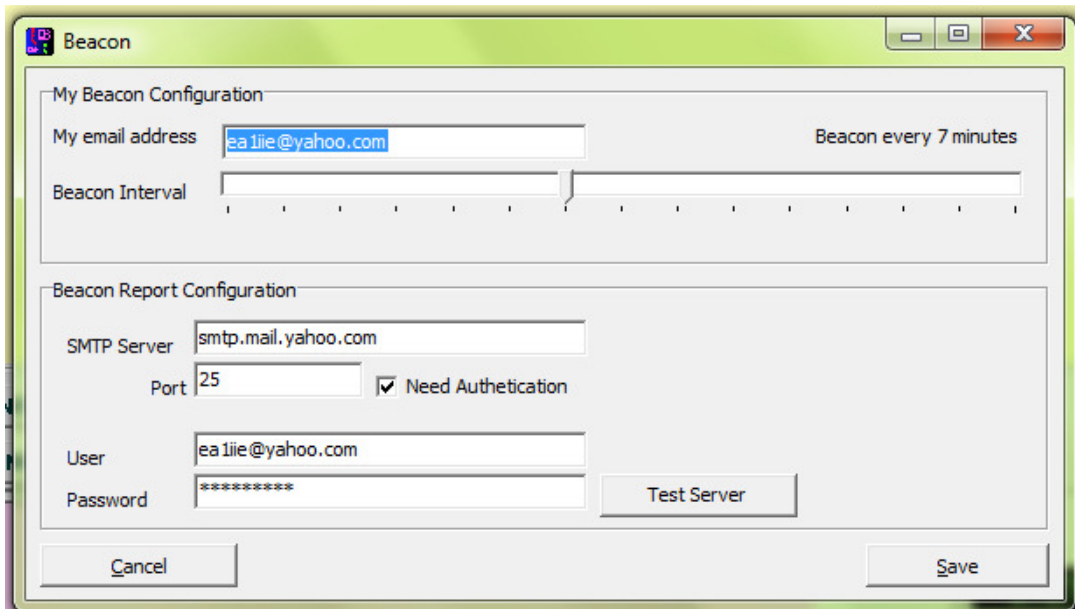
You can select the method in which PTT keying. Go to "Main / Transceiver" and choose between turning through a serial port connection and RTS, or by VOX in the equipment itself.

In the future it is planned to control it by "CAT" and to set frequencies.

5 – Beacon

A utility of this program, unlike commonly used in PSK is the beacon. With it, you can send messages every X minutes indicated a locator and email, so that other users using "Good PSK fo CB" may issue you listening reports.

Go to "Main / Beacon" and then you will see a window like this:

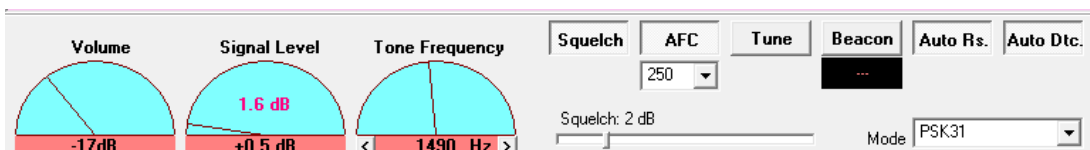


The upper zone is used to set your own mark, indicating the time interval you want to be transmitted, and the email you want to appear in it.

The lower zone is to set the beacon response system, must indicate the mail server data that asks.

When you have activated the "Auto Rs" whenever the program detects a beacon, sends the signal in a report by email to the transmitter.

6 – Buttons and indicators in the Main Window



Volume – Displays the average of the signal received by the audio input of the sound card of the PC

Signal Level – Displays the signal received from the other operator.

Tone Frequency – Displays the audio frequency. This is added to the operating frequency to establish the exact point of tx / rx.

Squelch - All operator signals do not reach the minimum indicated in the lower bar, will be discarded and not decoded. Enable or disable this function to discriminate against lower signals and intelligible.

AFC – Auto Frequency Control. Select the range that you want the program to adjust the receive frequency.

Tune –Sends a continuous tone to adjust equipment and couplers.

Beacon – Active the beacon. See below.

Auto Rs - If you want your program to respond automatically to the beacons received, select this button.

Auto Dtc - Enables automatic detection of callsigns, locators and emails in the reception box.

Frequency - Select the frequency to operate. Is important, because the reports are sent and QSL, include this frequency.